

#### Bale scale:

This digital scale system will display bale weights as they are ejected from the hay bale mechanism. The bale will move across the load cell and the signal monitored and translated to a weight reading by the unit. The systems algorithms remove the peaks and valleys of a bouncing bale of hay and display an accurate weight value.

1. The bale drops onto the load cell system
2. The unit senses the weight above the adjustable threshold.
3. The unit waits for an adjustable time period.
4. The unit monitors for two consecutive samples that are within the adjustable variance.
5. If a stable sample can not be obtained before the bale leaves the load cells, the samples are averaged and that average is used as the stable weight.
6. The obtained weight is then locked on the display.
7. The bale must leave the scale and the weight decrease below the threshold, and the cycle is re-set to step 1.

When not in the RUN mode, the operator can select to view 3 data items.

TOTAL WEIGHT  
NUMBER OF BALES  
AVERAGE WEIGHT

OPERATION:

The unit is powered up in the weight mode and displays the current weight that is on the scale.

1. Assure that the unit is operating and Push the ZERO button to obtain a zero weight reading with nothing on the scale.
2. Use the AVERAGE UP and AVERAGE DOWN buttons to set the number of bales to average.
2. To place the unit in the check-weigh mode, press the "\*" (star) button.

Note that all the lamps to the right of the weight display are flashing. This indicates that the unit is in the check-weigh mode.

3. The bale drops onto the scale.
4. After the weight has reached the threshold, and the average has been obtained, the display will flash ----- and then show the averaged weight of the bales weighed.
5. The next bale pushes the weighed bale off the scale so the weight on the scale will be less than the threshold. This will rearm for the next weighment. Continue at step #3.

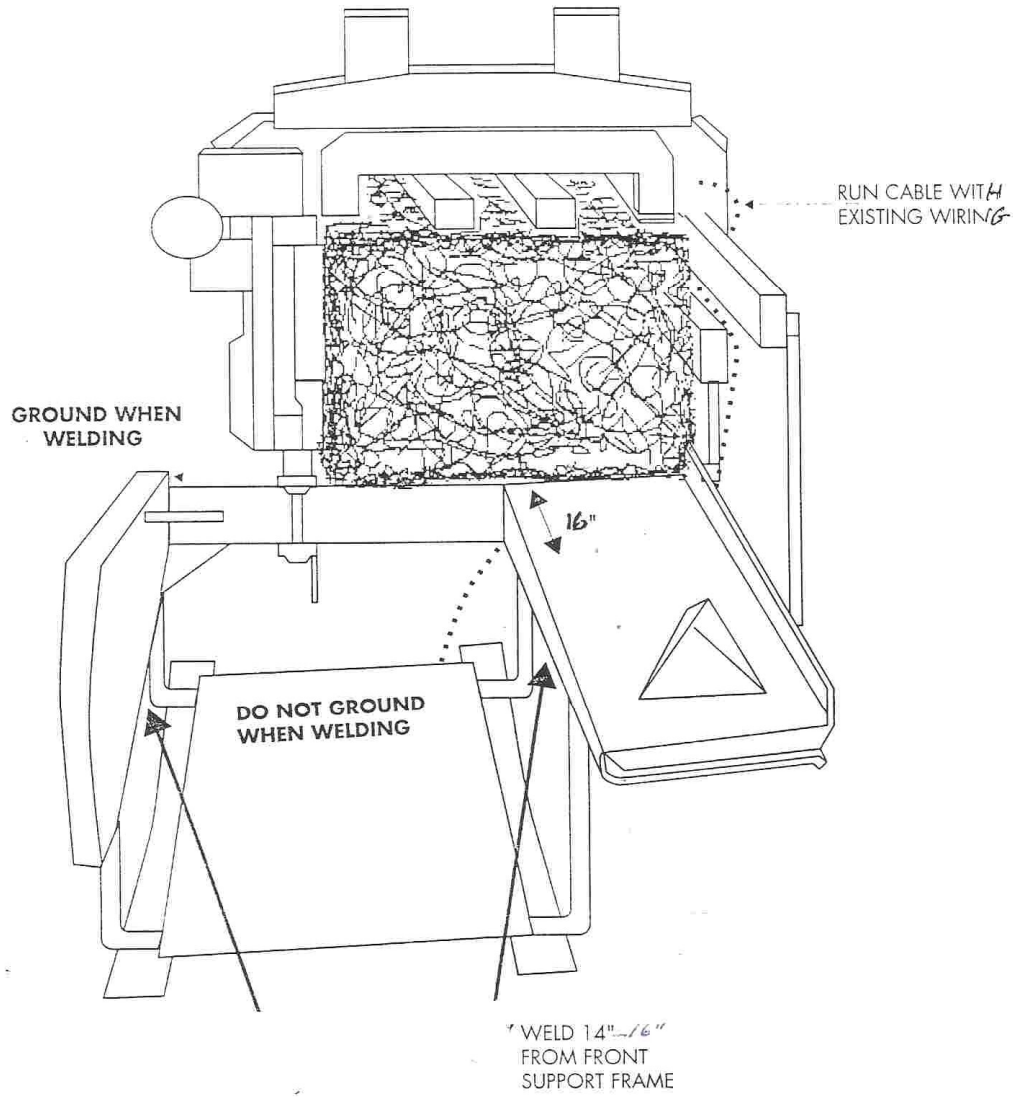
To exit the check-weigh mode, press the "\*" button.

View and/or clear the totals.

The unit accumulates each weighment to get a field total, a total number of bales weighed, and the overall bale average. These values can be displayed when the unit is not in the check-weigh mode, that is no lights flashing.

Press the SELECT button to scroll through the 3 displays of total, bale count and average.

To clear the totals, press the ZERO button when the total is being displayed.



BRACKET POSITION

USE FRAME AS TEMPLATE

